

www.maanz.org Compiled by Kathryn Portelli Sep 2013

START – Flinders St Station 2.2km walk – 1.5+ hours

Left out of Flinders St Station, down Flinders St, cross at pedestrian lights, then right into Degraves St. In Degraves Place in the alcove near corner is **c1 Random Acts of Gentle Anarchy – 2013** tile graffiti by UK visitors Carrie Reichardt and Linda Griffiths, both renowned Craftivists.

Continue on Degraves St to Flinders Lane, cross to Centre Place. Just before the steps, around the corner at the end of the shops, up high is **c2 Space Invader – 2003** glass by French traveller, Invader. 1 of 26 placed.

Back down Flinders Lane to first lane on LHS. Rothsay Lane, down low is **c3 Space Invader – 2003** glass. Melb & Perth were the only Aus cities hit.

Left at Elizabeth St, cross right at Flinders St. On corner building ahead is **c4 Beer Glasses - 1956** – 1st floor mural on outside of building made of Aus ceramic tiles for the 1956 Olympics from a serviette doodle of beer glasses.

Continue along Flinders, Rendezvous on RHS, through doorways is **c5 Rendezvous Hotel floor - 1913** – a ceramic renovation by MMS in right hand corner of the original, when a staircase was removed in 1998.

U turn to University Arcade, thru to Flinders Lane. Left to 333 main door. **c6 333 Collins - 1892** extensive ceramic floral and border floors in foyer.

Exit right on Collins, left to other side of Elizabeth St, arcade is on RHS **c7 Block Arcade - 1890** imported ceramic patterns, extensive floor works. (Heritage Tour Tues & Thurs by appt 9654 5244 www.theblockarcade.com.au)

Turn right under dome, to Collins St, turn left. Next mural is a little further along Collins St, at 247. Look across the road (or cross for closer look).

c8 Newspaper House - 1933 smalti mural celebrating the modern era with fast cars and trains and global communications. Shakespeare quote.

Enter Australia on Collins. Inlay **c9a** is on the stair landing at Food Court below and two more inlays **c10** (street level) at both Lt Collins St exits.

c9, c9a, c10 Australia on Collins - 1992 smalti Time Piece inlays

Cross to The Causeway opposite. Café doorway step on the LHS corner. **c11 Laurent Bakery - glass and brass inlay.** Further along lane on LHS is **c12 Gordon's Cafe - 2005** smalti logo, made by a commissioned tiler

Continue to Bourke St Mall. Look up above the **David Jones sign.**

c13 Buckley and Nunn – 1912 glass name and deer head grotesques

c14 Victoria House – 1912 glass name panels

c15 Buckley Men's – 1933 bas-relief Art Deco figures

Vast pavement works are in the tram lines and are great when wet. **c16 Tram Line - 2005** – broadcast stone, glass, shell inlays polished.

Uphill, right at Swanston St. Cross Lt Collins. Right at Caffé Mediterraneo. **c17 Manchester Unity Arcade - 1932** – tile and imported patterns, glass logo 'Friendship Love and Truth'. On Swanston St, the Town Hall is opposite.

A very informative 1 hour guided tour, leaving from the foyer of the MelbCityCouncil next door, at 11am or 1pm, requires a booking. Either go in just prior, or book in advance on 9658 9658 or www.melbourne.vic.gov.au.

c18 Ideal Life murals – 1927 20 large painted murals on gridded 12" tiles. Now you could visit some of the nearby sites from other maps.

f11 Brunetti, f12 Ladies Only and f13 St Paul's Cathedral are on the way to Flinders St Station. **f11l Paradiso** is in the station portico and **f2 Space Invader** is just across the road on the bridge. OR catch the free clockwise CITY CIRCLE TRAM downhill to connect with 3 Docklands Southern

Cross, alighting at Spencer St to walk to Crown Plaza. OR take the CITY CIRCLE TRAM uphill to connect with 5 St Pat's Parliament.

2 Central Flinders

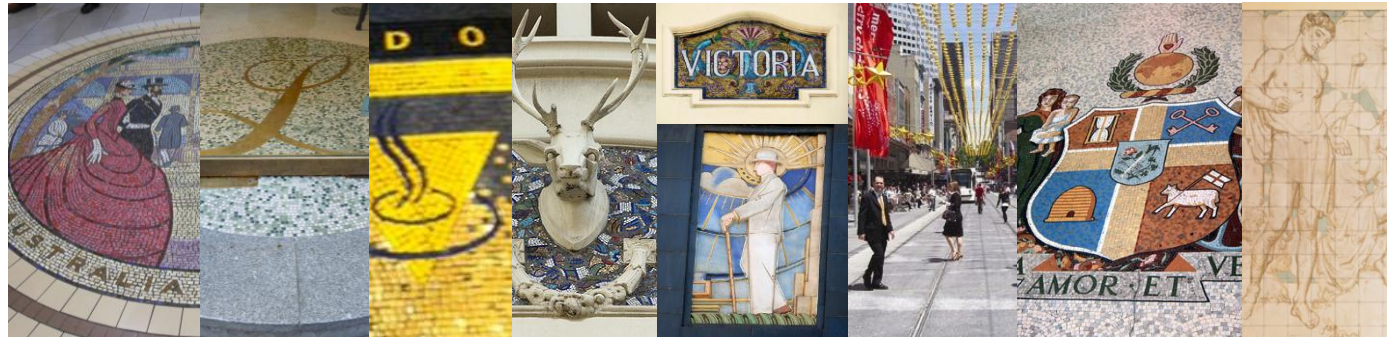
Melbourne, Victoria, Australia



Random Acts c1 Reichardt/Griffiths **Space Invaders in 2 laneways** c2&3 Invader **Beer Glasses** c4 Richard Beck **Rendezvous** c5 Unknown **333 Collins** c6 Imported **Block Arcade** c7 Imported **News'House** c8 Napier Waller



- c1** Degraves Place alcove
- c2** Centre Place around corner of shop called Body just before the steps
- c3** Corner of Rothsay Lane
- c4** Corner Elizabeth and Flinders Sts
- c5** 328 Flinders St
- c6** Flinders Lane entrance thru to 333 Collins (choose the entrance with the wide steps)
- c7** 98 Elizabeth St, exit 282 Collins St
- c8** 274 Collins St
- c9c9a** 260 Collins St,
- c10** 309 Lt Collins St
- c11** 306 Lt Collins St, cnr The Causeway
- c12** Shop 4, The Causeway (LHS)
- c13** David Jones, Bourke St Mall
- c14** David Jones, Bourke St Mall
- c15** David Jones, Bourke St Mall
- c16** Bourke St Mall tramlines
- c17** 99 Swanston St, exit 220 Collins St
- c18** Town Hall, Swanston St, Enter via Melb City Council building next door. Tours leave from Reception



Aus on Collins c9,c9a,c10 MMS **Laurent** c11 Unknown **Gordon's** c12 tiler **Buckley & Nunn – 3 buildings** c13, c14, c15 **Tramlines** c16 Public Art Squad **Manchester Unity Arcade** c17 Murray Griffin **Ideal Life** c18 Napier Waller